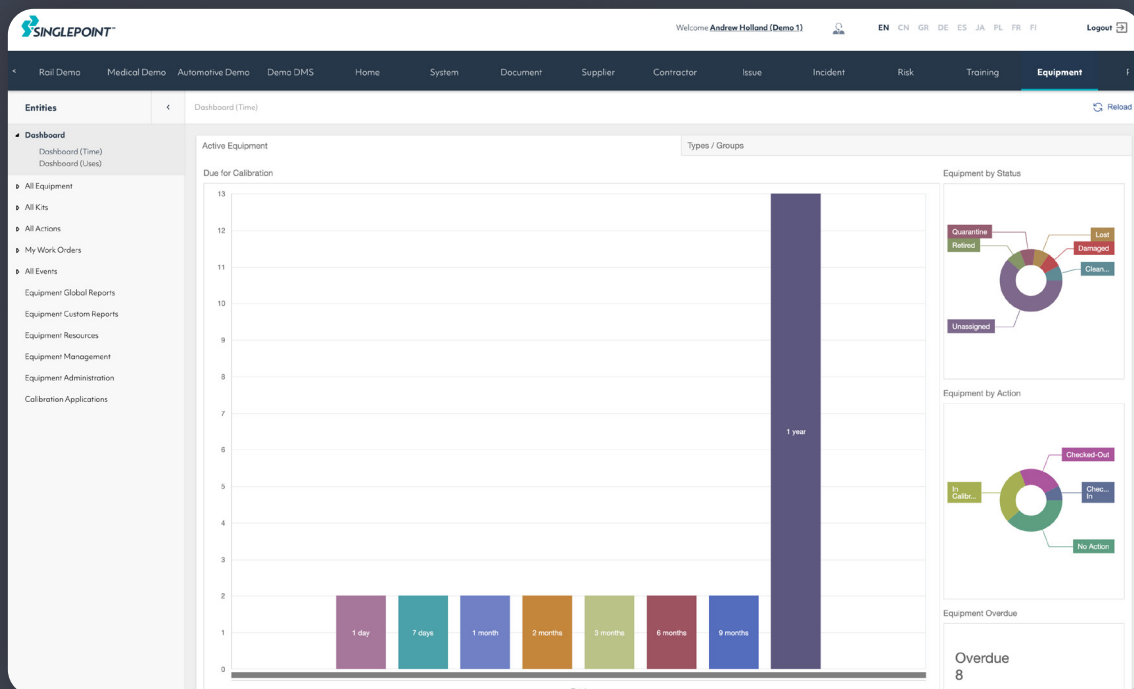


## PRODUCT DATA SHEET

# SINGLEPOINT CALIBRATION MANAGEMENT FOR UNPARALLELED EQUIPMENT OVERSIGHT AND LIFECYCLE MANAGEMENT.

### Calibration Manager

Provides a one-stop solution to the problem of managing all of your assets such as calibration for gauges, tooling servicing and equipment maintenance cycles.



The problem that we see repeated many times with our customers is that too many “home grown” systems have sprung up to handle individual items such as calibration; the result is a fragmented approach which causes confusion and can lead to inefficiencies and key dates being missed.

Furthermore, these systems are often the brainchild of an individual employee and problems can occur if and when that person leaves your company or simply moves to another department or project.

Singlepoint Equipment Manager delivers compliance-strength control, including automatic reports across all of your assets and their related activities – for example, of when gauges are due for calibration, or when certain machines may need to be serviced, as well as the complete historic audit trail.

## Experience

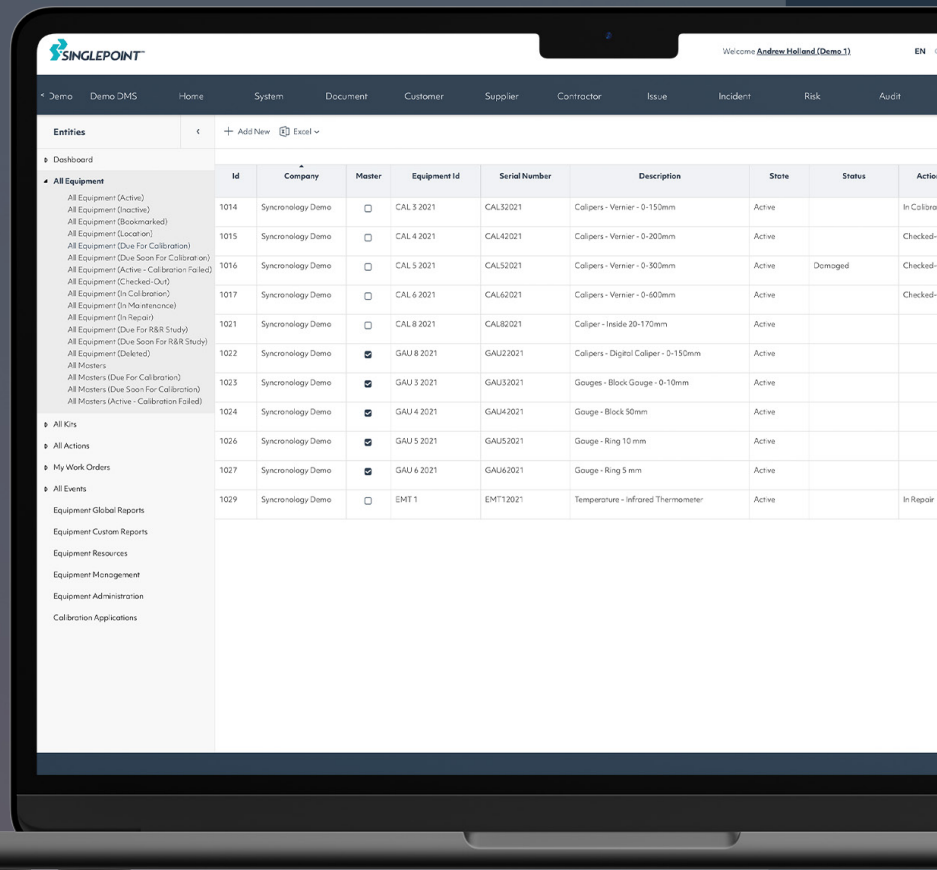
Experience has many years' experience of working with customers in this area and we know what is required as a solution. Singlepoint Equipment Manager is a highly flexible and very powerful solution to the task of managing a whole range of assets and equipment, such as gauges, test and laboratory equipment, plant and machinery, tooling and more besides. In fact, any asset that requires a scheduled and / or reactive approach to maintenance, servicing, calibration and repair can be managed within the module.



## Visibility

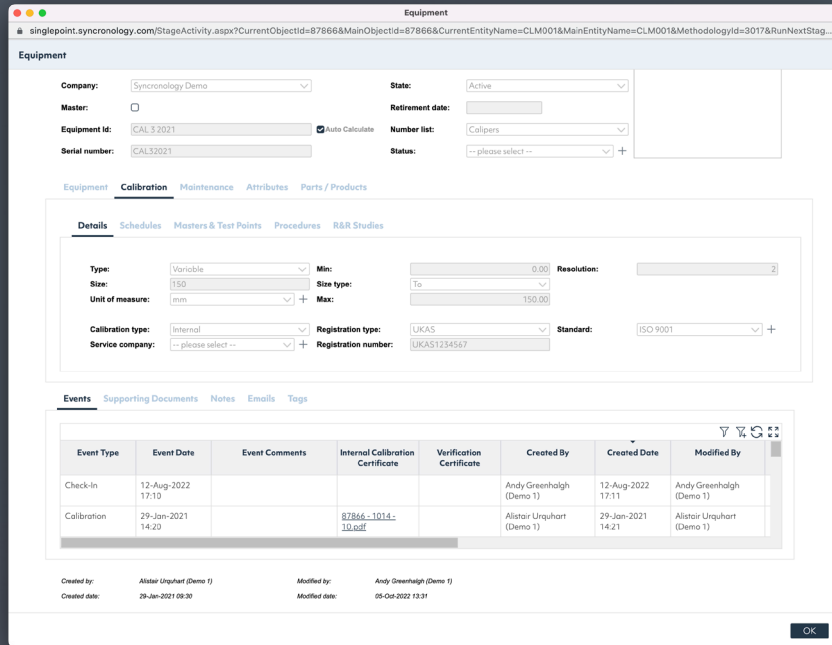
One of the key things you will love about this module is the access you will have to the key data that will make you and your colleagues so much more efficient. The screenshot above is merely an example of the type of report or dashboard you can design that takes you straight to the information you really need.

This is all achieved using Singlepoint own Business Intelligence tool called Radar; you will be able to design your own reports and dashboards that suit the exact mix and focus of the data you're interested, giving you better insights than ever before across a huge range of equipment assets.



The screenshot displays the Singlepoint Equipment Manager interface. At the top, there is a navigation bar with the Singlepoint logo and a user profile for Andrew Holland (Demo 1). Below this is a breadcrumb trail: Demo > Demo DMS > Home > System > Document > Customer > Supplier > Contractor > Issue > Incident > Risk > Audit. The main content area is titled 'Entities' and includes a '+ Add New' button and an 'Excel' icon. A sidebar on the left lists various equipment categories under 'All Equipment', such as 'All Equipment (Active)', 'All Equipment (Inactive)', 'All Equipment (Bookmarked)', 'All Equipment (Location)', 'All Equipment (Due For Calibration)', 'All Equipment (Due Soon For Calibration)', 'All Equipment (Active - Calibration Failed)', 'All Equipment (Checked-Out)', 'All Equipment (In Calibration)', 'All Equipment (In Maintenance)', 'All Equipment (In Repair)', 'All Equipment (Due For RSR Study)', 'All Equipment (Due Soon For RSR Study)', 'All Equipment (Depleted)', 'All Masters', 'All Masters (Due For Calibration)', 'All Masters (Due Soon For Calibration)', and 'All Masters (Active - Calibration Failed)'. Other sidebar categories include 'All Kits', 'All Actions', 'My Work Orders', and 'All Events'. The main table displays a list of equipment assets with the following columns: Id, Company, Master, Equipment Id, Serial Number, Description, State, Status, and Action. The table contains 14 rows of data, including items like 'Calipers - Vernier - 0-150mm', 'Calipers - Vernier - 0-200mm', 'Calipers - Vernier - 0-300mm', 'Calipers - Vernier - 0-600mm', 'Caliper - Inside 20-170mm', 'Calipers - Digital Caliper - 0-150mm', 'Gauges - Block Gauge - 0-10mm', 'Gauge - Block 50mm', 'Gauge - Ring 10 mm', 'Gauge - Ring 5 mm', and 'Temperature - Infrared Thermometer'.

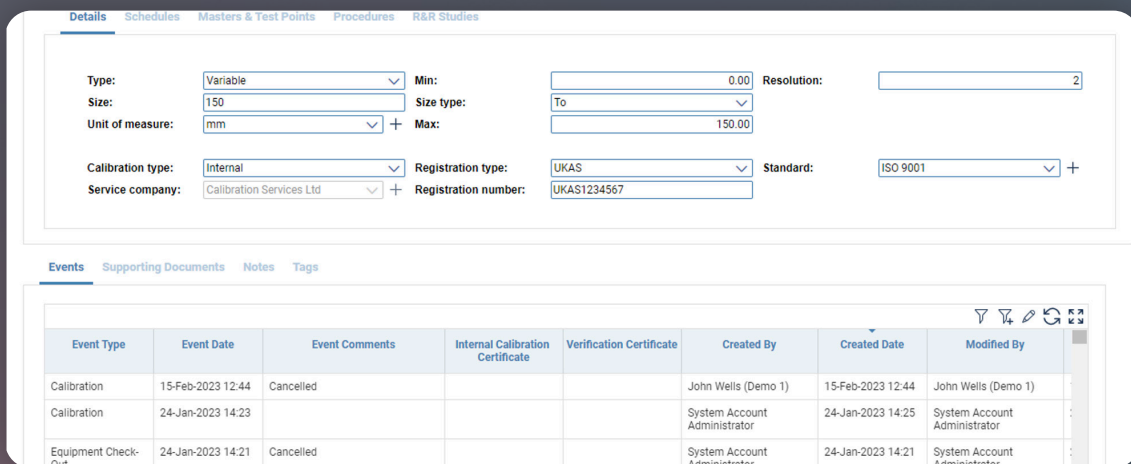
Id	Company	Master	Equipment Id	Serial Number	Description	State	Status	Action
1014	Synchronology Demo	<input type="checkbox"/>	CAL3 2021	CAL32021	Calipers - Vernier - 0-150mm	Active		In Calibra
1015	Synchronology Demo	<input type="checkbox"/>	CAL4 2021	CAL42021	Calipers - Vernier - 0-200mm	Active		Checked-
1016	Synchronology Demo	<input type="checkbox"/>	CAL5 2021	CAL52021	Calipers - Vernier - 0-300mm	Active	Damaged	Checked-
1017	Synchronology Demo	<input type="checkbox"/>	CAL6 2021	CAL62021	Calipers - Vernier - 0-600mm	Active		Checked-
1021	Synchronology Demo	<input type="checkbox"/>	CAL8 2021	CAL82021	Caliper - Inside 20-170mm	Active		
1022	Synchronology Demo	<input checked="" type="checkbox"/>	GAU8 2021	GAU82021	Calipers - Digital Caliper - 0-150mm	Active		
1023	Synchronology Demo	<input checked="" type="checkbox"/>	GAU3 2021	GAU32021	Gauges - Block Gauge - 0-10mm	Active		
1024	Synchronology Demo	<input checked="" type="checkbox"/>	GAU4 2021	GAU42021	Gauge - Block 50mm	Active		
1026	Synchronology Demo	<input checked="" type="checkbox"/>	GAU5 2021	GAU52021	Gauge - Ring 10 mm	Active		
1027	Synchronology Demo	<input checked="" type="checkbox"/>	GAU6 2021	GAU62021	Gauge - Ring 5 mm	Active		
1029	Synchronology Demo	<input type="checkbox"/>	EMT1	EMT12021	Temperature - Infrared Thermometer	Active		In Repair



## Easy of use

Equipment Manager has been designed to provide the user with a quick and easy to use interface. Main features are configurable “quick filters” on the left-hand side that allow the user to quickly find and locate different categories of equipment, gauges or tooling etc. (e.g. gauges due for calibration) and of course full workflow capability against each item, e.g. calibrate in-house, calibrate externally, check out for work etc.

## Each item has its own unique full life cycle record.



Default Settings

singlepoint.synchronology.com/StageActivity.aspx?CurrentObjectId=1006&MainObjectId=1006&CurrentEntityName=CLM006&MainEntityName=CLM006&MethodologyId=3017&RunNextStage...

Default Settings

Equipment / Kit Settings **Calibration Details** Verification Details Maintenance Details R&R Details Attributes Module Options Global Options Application

Calibration certificate auto calculate  
 Allow to create serial of test points

Calibration certificate prefix:  Calibration certificate number:  Calibration certificate suffix:   
 Calibration type:  Temperature unit of measure:  Resolution:

**Schedule by due date** **Schedule by accumulation of time** **Schedule by accumulation of uses**  
 Period type:  Period type:  Period type:   
 Period:  Period:  Period:   
 Reminder threshold (days):  Reminder threshold (hours):  Reminder threshold:   
 Due date auto calculate  Hours accumulated auto calculate

The tabs contain further detailed information.

Work Order

Work order id: 1009

Requested by:  + Requested date:    
 Company:  + Owner:   
 Priority:  + Due date:   
 Action:  +

Description:

Contact company:  + Equipment:  Location type:   
 Contact:  + Equipment id:  Department:   
 Contact email:  Serial number:  Location:   
 Contact phone:  Description:  Machine:   
 Action:  Process:   
 Owner:  Area:   
 Current location:  [Update](#) Sub location:

Supporting Documents Notes

Document	Description	Uploaded By	Uploaded Date
There are no items			

**Work Order**

Work order id: 1009

Requested by: Andrew Holland (Demo 1) + Requested date: 23-Feb-2023 14:35

Company: Synchronology Demo Owner: Andrew Holland (Demo 1)

Priority: -- please select -- Due date: 23-Feb-2023

Action: -- please select -- +

Description:

Contact company: Synchronology Demo Equipment: Location type: -- please select --

Contact: -- please select -- + Equipment id: Department: -- please select -- +

Contact email: Serial number: Location: -- please select -- +

Contact phone: Description: Machine: -- please select -- +

Action: Process: -- please select -- +

Owner: Area: -- please select -- +

Current location: Update Sub location: -- please select -- +

## Kit Management

At the request of several customers, Equipment Manager features the ability to group individual items of equipment to form 'kits' – these can then be tracked, checked in / checked out, serviced, calibrated and repaired as a 'kit' instead of as several separate items.

**Id:** 1006 **State:** Active

**Bookmark:**

**Company:** Synchronology Demo

**Kit Id:** Block Kit

**Kit** Equipment Attributes

**Type 1:** Block Gauge + **Group 1:** Gauges +

**Type 2:** Analogue + **Group 2:** Block Gauge +

**Type 3:** -- please select -- + **Group 3:** 0-50mm +

[Update description](#)

**Description:**

Block Gauge Kit

## Barcode Check In/Out

Equipment Manager features a very cool and useful app that enables you to use your barcode scanner to check your equipment in and out, speeding up this process and making you and your users more efficient than ever.

# About Singlepoint

Singlepoint is a rapidly adaptable no code QMS and compliance platform that helps manufacturing and engineering businesses continually improve processes, reinforce a culture of compliance and drive quality from a single source of truth.

## Expert UK support at every step

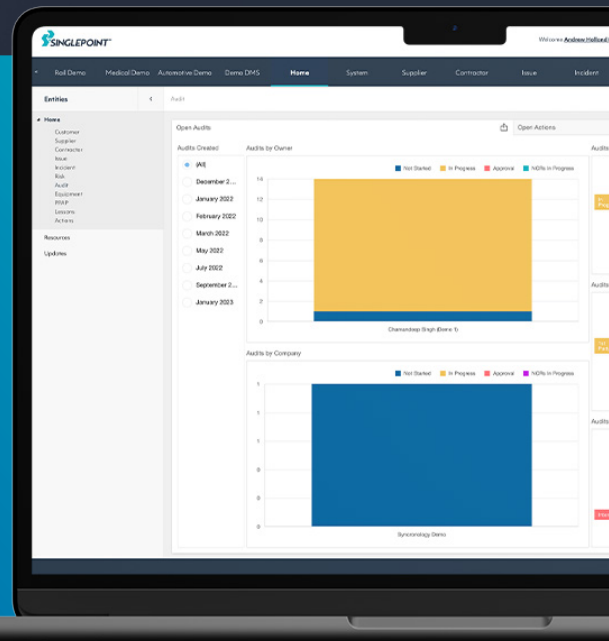
With over twenty years experience in process improvement, our team is on-hand to support throughout the implementation process and ongoing development and support of your system.

## Schedule a free demo

Find out how we can help your organisation improve processes, reinforce a culture of compliance and drive quality from a single source of truth.

Contact us today to arrange a call and, together, we can take the first steps towards making your QMS truly come alive.

[Book a demo](#)



[www.singlepointqms.com](http://www.singlepointqms.com)

Copyright© Agile Group 2023

